



Innovative  
Tropical  
Rainforest  
Conservation

SARAWAK



FORESTRY

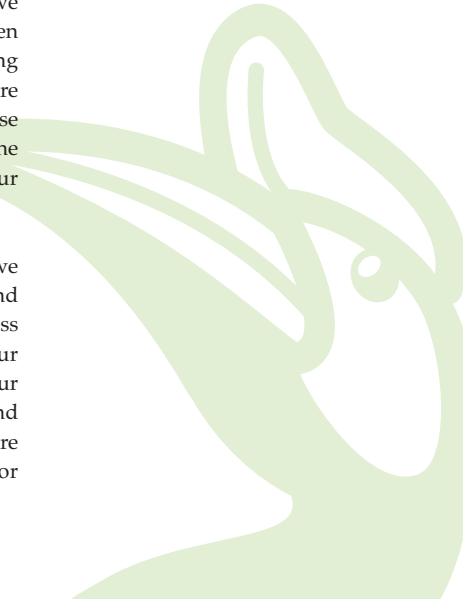


# SELAMAT DATANG

Welcome to SARAWAK FORESTRY, and the unique vision we are planning to achieve - *global recognition as the leader in tropical forest conservation and products.*

We are entrusted to safeguard and sustainably manage the amazing biodiversity in Sarawak's forests - covering tens of thousands of species of animals, plants, fungi and other life forms. As custodians of Sarawak's forests we are committed to act responsibly. We have also been given a unique opportunity to make a lasting contribution to the environment and the people. We are confident SARAWAK FORESTRY will carry out these responsibilities professionally and successfully, with the cooperation and support of our employees, our stakeholders and the community.

As we work together to achieve our common goals, we will bring the right blend of passion, dedication and professionalism to this task - for the rewards of success will not be shared only by us. Our children, our grandchildren and future generations will recognize our successful stewardship of the natural environment and its conservation. Our employees and their families are therefore critical stakeholders in this quest for sustainability.



# INTRODUCTION

SARAWAK FORESTRY has been established by the State Government to position Sarawak at the forefront of sustainable forest management and conservation, as outlined in Sarawak Forestry Corporation Ordinance, approved by the State Legislative Assembly in 1995. SARAWAK FORESTRY's workforce comprises well-trained and highly motivated professionals from every field of resource management. To ensure effective and highly focused performance, SARAWAK FORESTRY launched its operation on June 9, 2003 and is organized into six key business units, which are all committed to responsibly manage and conserve Sarawak's forests. SARAWAK FORESTRY's functions are governed by 4 major ordinances, namely the Sarawak Forestry Corporation Ordinance, 1995; the Forests Ordinance, 1958; the National Parks and Nature Reserves Ordinance, 1998 and the Wild Life Protection Ordinance, 1998. Its functions include:

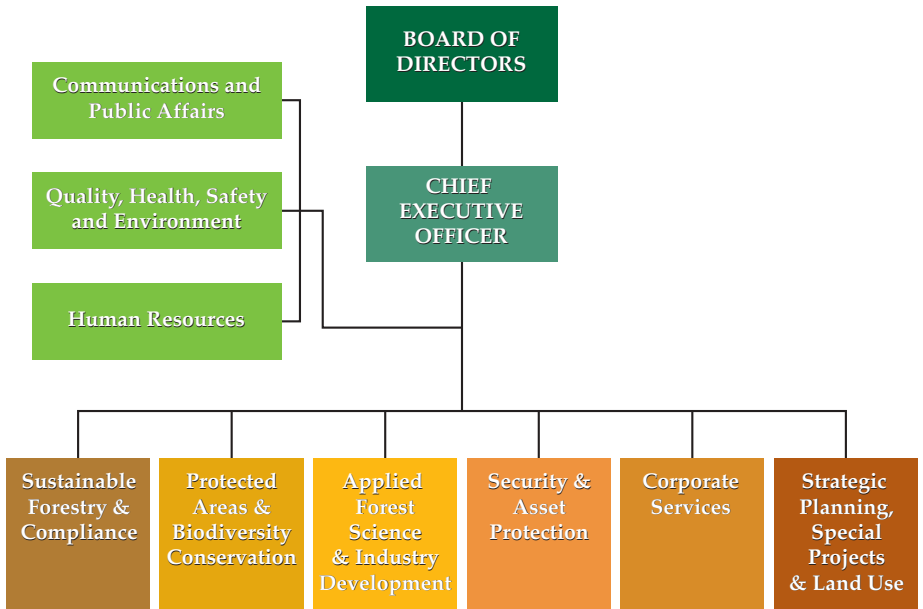
- Sustainable forest management and conservation
- Reforestation and rehabilitation
- Management of protected and totally protected areas
- Enforcement of forestry and forestry-related legislation
- Conducting scientific research on Sarawak's rainforests and its products
- Training and education of employees, stakeholders and the general public
- Providing customers of Sarawak's forest products with reliable information and support

SARAWAK FORESTRY is certified with ISO9001: 2000, ISO 14001:1996 and OHSAS 18001:1999 from the Department of Standards Malaysia, United Kingdom Accreditation Service and Moody International Certification.

The world largest flower *Rafflesia Tuan-Mudae* at Gunung Gading NP



# CORPORATE STRUCTURE



## OUR VISION

To be globally recognized as the leader in tropical forest conservation and products.

## OUR MISSION

To conserve and develop Sarawak's forest products and services while maintaining a balance of economics, environmental and social interests.

## OUR VALUES

Integrity

Customer-focused

Accountable

Recognition for performance

Environmental stewardship

**'I CARE'**



# SUSTAINABLE FORESTRY & COMPLIANCE

The Sustainable Forestry and Compliance Unit is the principal operational business unit of SARAWAK FORESTRY. It administers the economic, environmental and social aspects of Sarawak's forests, working in collaboration with the timber industry and non-timber producers and rural communities. The unit consists of three departments, namely, Sustainable Resource Management, Compliance and Revenue.

The unit has 18 offices located throughout the State and carries out a broad range of activities to ensure the implementation of Sustainable Forest Management (SFM), the regulation of timber industry operations and practices, and the monitoring of compliance with measures designed to conserve and enhance the State's forest resources. Its key tasks include:

- Managing the State's forest resources according to SFM requirements
- Collecting revenue on all forest produces harvested from licensed areas
- Monitoring timber harvesting operations through harvesting plans, forest inventories and surveys
- Implementing conservation and rehabilitation activities, including forest regeneration
- Supporting positive community relations and development activities, to improve the socio-economic standing of rural communities



# PROTECTED AREAS AND BIODIVERSITY CONSERVATION

Sarawak has one of the most extensive networks of protected areas in Southeast Asia, with 18 national parks, 4 wildlife sanctuaries and 5 nature reserves. These parks offer nature lovers an opportunity to explore the Borneo rainforest, see rare wildlife and enjoy spectacular attractions. Some of our national parks are world-famous, such as Bako with its remarkably diverse ecosystems, and Niah with its 40,000 year history of human habitation. Gunung Mulu, home to one of the world's largest cave systems, enjoys UNESCO World Heritage Site Status.

Our national parks and nature reserves showcase the State's natural heritage and act as key attractions for Sarawak's expanding tourism industry. Wildlife sanctuaries, however, are not open to visitors and exist to preserve and conserve vulnerable ecosystems or endangered wildlife. Each has its own crucial role to play in protecting the natural environment and our remarkable biodiversity.

The Protected Areas and Biodiversity Conservation Unit (PABC) is the management authority for Totally Protected Areas and conservation of biodiversity in the state of Sarawak. As the custodian of Sarawak's national parks, other protected areas and protected species and wildlife in general, this unit has the greatest interaction with the general public and enjoys the greatest public awareness. Their functions include:

- Management of national parks, wildlife sanctuaries, nature reserves and other protected areas
- Protection, enhancement and regeneration of Sarawak's indigenous flora and fauna, including wildlife rescue and rehabilitation, both inside and outside protected areas
- Activities related to forest biodiversity conservation
- Raising public awareness on conservation
- Business development and project planning for conservation based activities
- Promotion and regulation of nature-based tourism



Orangutan *Pongo Pygmaeus* at Semenggoh Wildlife Centre

# APPLIED FOREST SCIENCE AND INDUSTRY DEVELOPMENT (AFSID)

The Applied Forest Science and Industry Development Unit is the research and development arm of SARAWAK FORESTRY. It is assigned to play crucial enabling roles towards the much desired attainment of sustainable forest management, forest conservation, value-added processing and other sectoral goals. Their activities include:

- Research on biodiversity on forest ecosystems, recovery of endangered species and habitat management
- Research on applied forest practices, soil, watershed and hydrology, forest protection and tree improvement
- Study on forest community relations, conflict resolution and agroforestry
- Research on basic wood properties, efficient utilization of forest resources and product development
- Develop and implement forestry and technical training programmes to enhance competency of forestry workforce
- Maintain up-to-date internationally recognized reference collections
- Coordinate provision of services, research applications and revenue generation activities from AFSID resources and capacities



# SECURITY AND ASSET PROTECTION

The Security and Asset Protection Unit is tasked with protecting the State's forest assets, the organization and its function against pure risks losses. The core business of the unit is to enforce the following three ordinances:

- Forest Ordinance (Cap.126) 1958
- Wild Life Protection Ordinance 1998 and subsidiary regulations
- National Parks and Nature Reserves Ordinance 1998

Security and asset protection programs include:

- Education and outreach
- Security awareness
- Patrol presence and deterrence
- Intelligence
- Security checkpoint
- Investigation
- Disaster control

The Security and Asset Protection Unit also runs a Helpline (Tel : (+6) 082 302 606 or (+6) 019-889 7222) so that members of public can provide information on any offences committed under the three ordinances above.





# CORPORATE SERVICES

Corporate Services is a critical business unit which was established to serve and support other business units within the Organization as well as external corporate customers in pursuit of the corporate vision and mission.

In driving the efficient operations and delivering corporate service services, it aims to create a conducive environment for other business units to achieve their respective business objectives.

Being the nerve centre of the Organization, it is an amalgamation of various departments that provide a diverse array of services to the customers in an integrated and transparent manner. Its activities include:

- Financial supports
- Procurement services
- Assets and Facilities Management
- Corporate Support Services
- Information Communication Technology





# STRATEGIC PLANNING, SPECIAL PROJECTS AND LAND USE

The Strategic Planning, Special Projects and Land Use Unit is tasked with developing strategies and solutions to position SARAWAK FORESTRY at the forefront of the global forestry industry, as role model for both forest production and biodiversity conservation. Its multi-disciplinary project teams are responsible for devising innovative and effective strategies to enhance both forest conservation and production. Its principal tasks include:

Economics and resource planning, including economic analysis, revenue forecasting, monitoring of markets and product pricing recommendations

Policy development including interpreting, analyzing and reviewing ordinances, industrial development and forest policy

Land use planning and management

Engaging and developing relationships with customers, strategic partners and stakeholder







# SARAWAK



# FORESTRY

## LOGO RATIONALE

The overall concept for the SARAWAK FORESTRY logo revolves around sustainable forest management and conservation.

Amongst the four components of the logo, the leaf reflects the foundation of all the flora species in Sarawak. The leaf also signifies SARAWAK FORESTRY's efforts and responsibilities in biodiversity conservation.

The tree component represents sustainable forest management to ensure the optimal use and conservation of our forest resources. The orangutan represents the diversity of wildlife in the State. It also signifies conservation efforts to safeguard all wildlife, particularly the endangered species.

The hornbill gives the logo a distinctive identity that it is Sarawakian, since this rare species is the official State bird.

The logo consists of two principal colours, namely green and brown to represent nature and earth. There are also two secondary colours, namely light brown and ochre to compliment the two principal colours.



# MAJOR FOREST TYPE OF SARAWAK



Mangrove Forest

Peat Swamp Forest

Hill Forest

Secondary Forest



The Proboscis Monkey *Nasalis Larvatus* at Bako NP

## **SARAWAK FORESTRY**

Level 12, Office Tower, Hock Lee Centre,  
Jalan Datuk Abang Abdul Rahim,  
93450 Kuching, Sarawak, Malaysia.  
Tel: (+6) 082 348001 Fax: (+6) 082 488654  
Toll Free Line: 1-800-88-2526

**[www.sarawakforestry.com](http://www.sarawakforestry.com)**